

Stock Code: 002979









LEADSHINE CORPORATE PROFILE

Your Reliable Motion Control Partner

Headquarters Leadshine Technology Co., Ltd.

-  +86 755 26411692
-  +86 755 26402718
-  www.leadshine.com
-  sales@leadshine.com (Sales)
-  tech@leadshine.com (Technical Support)
-  15-20/F, Block B, Nanshan I Valley, No.3157, Shahe West Road, Nanshan District, Shenzhen, Guangdong, China

North America Office Leadshine America, Inc.

-  1-949-608-7270
-  1-949-638-7298
-  www.Leadshineusa.com
-  sales@leadshineusa.com (Sales)
-  tech@leadshineusa.com (Technical Support)
-  26050 Towne Centre Dr.Foothill Ranch, CA 92610 USA

Company Profile



• Headquarters in Shenzhen



• Industrial Park in Shanghai



• Manufacturing Facilities in Shenzhen

Your Reliable Motion Control Partner

- Founded in 1997
- Public Listed Company in China (002979.SZ)
- Dedication in Motion Control
Stepper/Servo systems, Motion Controllers, PLC Control systems, I/O Modules, Encoders
- A leading supplier of motion control products and solutions in the world
- Customer Oriented, Technology Oriented, Forever Improving, Sharing of Success

 **25+**
Experience

 **200+**
R&D Engineers

 **5**
Subsidiaries

 **60+**
Countries Clients

 **10000+**
Global Partners

 **20million+**
Installed Axes

Quality Assurance

Certificate

- ISO 9001:2008
- CCC
- CE
- RoHS



Process

- 128-hour product aging test
- 28 quality inspection and monitoring procedures
- 100% full inspection system



Corporate Culture

Our Mission

Focus on the challenges and difficulties our customers are facing, provide proficient motion control products & solutions and strive to bring unparalleled value for our customers!

Our Vision

To be world class motion control and industry solution provider.

Our Value

Customer oriented, aspirant directed, self-regulating, unity in teamwork .

Our Objectives

Serving our customers is Leadshine's sole priority.

Founder



Dr. Warren Li

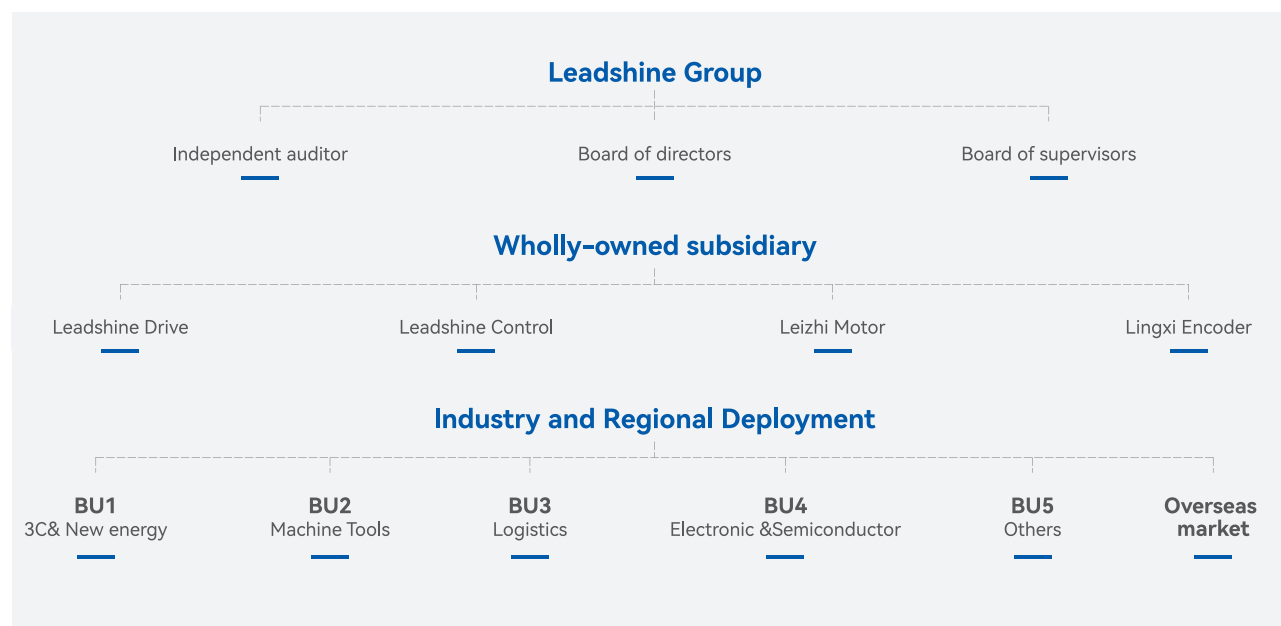
Received a PhD in Robotics and Automation from Massachusetts Institute of Technology (MIT) in 1990.

Has worked as an associate professor at WSU State University in Michigan, the Hong Kong University of Science and Technology, and meanwhile served as a technical consultant for many high-tech companies in the United States, Hong Kong, etc.

Member of American Society of Mechanical and Electrical Engineers (ASME), American Institute of Electronic Engineers (IEEE), International Society of Control System Engineers (ICS), etc.

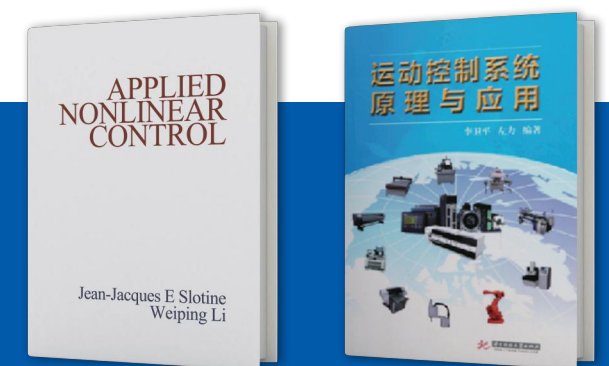
Vice President of China Engraving and Cutting Industry Alliance, Vice President of Shenzhen Robotics Association, Executive Director of Guangdong Automation Association

Organization Structure



Industry leadership

- Won the "Industrial Achievement Award" at China Automation Annual Conference
- Won the medal of "Shenzhen Electronic Equipment Industry Model Worker"
- Won the 2017 CAIMARS "Intelligent Service Leader" Award



Product Family



Stepper Products

Motors are made of high quality materials like the bearings and shafts from Japan.

Highly reliable with excellent performance including high precision, low vibration, low motor heating.

Servo Products

With generations of high performance servo drive families and motion control solutions, Leadshine Servo Products are unparalleled in performance, capabilities, and flexibility with high velocity loop bandwidth, zero settling time and position error, non-linear control and vibration suppression algorithms, suitable for a wide range of applications and industries.

Integrated Motors

Integrated Motors are made with high performance drives and motors, and deliver high power in a compact high quality package that can help machine builders cut down on mounting space and cables, increase reliability, eliminate motor wiring time, save labor costs, at a lower system cost.

Controls

Based on the accumulation of motion control algorithms for more than 20 years, Leadshine has developed the full-line control products independently, with rich functions and powerful performance, are widely applicable to various industry scenarios.

Stepper Motors

- CM / CS-M Series
- 3S Series

Servo Motors

- ELM1 Series
- ELM2 Series
- ELVM Series

Stepper Drives

- 2EM3EIP / 2CS3EIP Series
- 2EM3E / 2CS3E Series
- EM3EIP / CS3EIP Series
- EM3E / CS3E Series
- EM2RS / CS2RS Series
- DM / EM / CS Series

Servo Drives

- EL8 Series
- EL7 Series
- EL6 Series
- ELD2 Series
- 2ELD2 Series

Integrated Stepper Motors

- iEM Series
- iEM-RS Series

Integrated Closed Loop Stepper Motors

- iCS Series
- iCS-RS Series

Integrated Servo Motors

- iSV Series
- iSV2-CAN Series
- iSV2-RS Series

PLC

- LC5000 Series
- LC2000 Series
- LC1000 Series

Remote I/O Modules

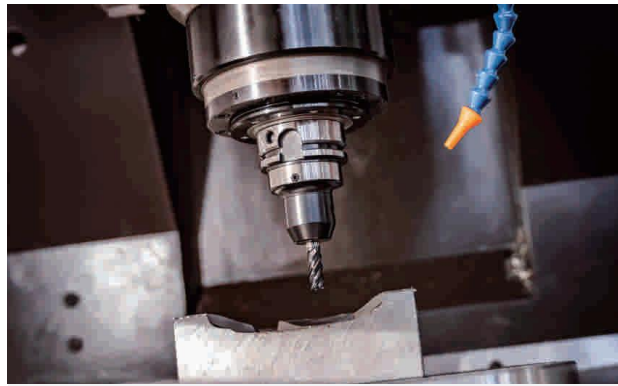
- R2EC Series
- PM Series xtension modules

Motion Controllers

- 5000 Series
- 3000 Series
- 1000 Series



Application



Special Machine Tool Industry

- Die stamping machine
- CNC machine



Laser Machine Industry

- Laser marking machine
- Jade carving machine
- Laser cutting machine
- Wood carving machine



AGV Logistics Industry

- Warehouse robot
- Sorting robot
- Inclined guide wheel
- Cross belt sorter
- sorter Multi-layer shuttle



Electronic Manufacturing Equipment

- Dispensing machine
- SMT
- Screw locking machine
- Battery industry
- Wire stripping machine



Industrial Robots

- Multi-joint industrial robot
- SCARA robot
- Injection molding robot
- Stamping robot



Packaging

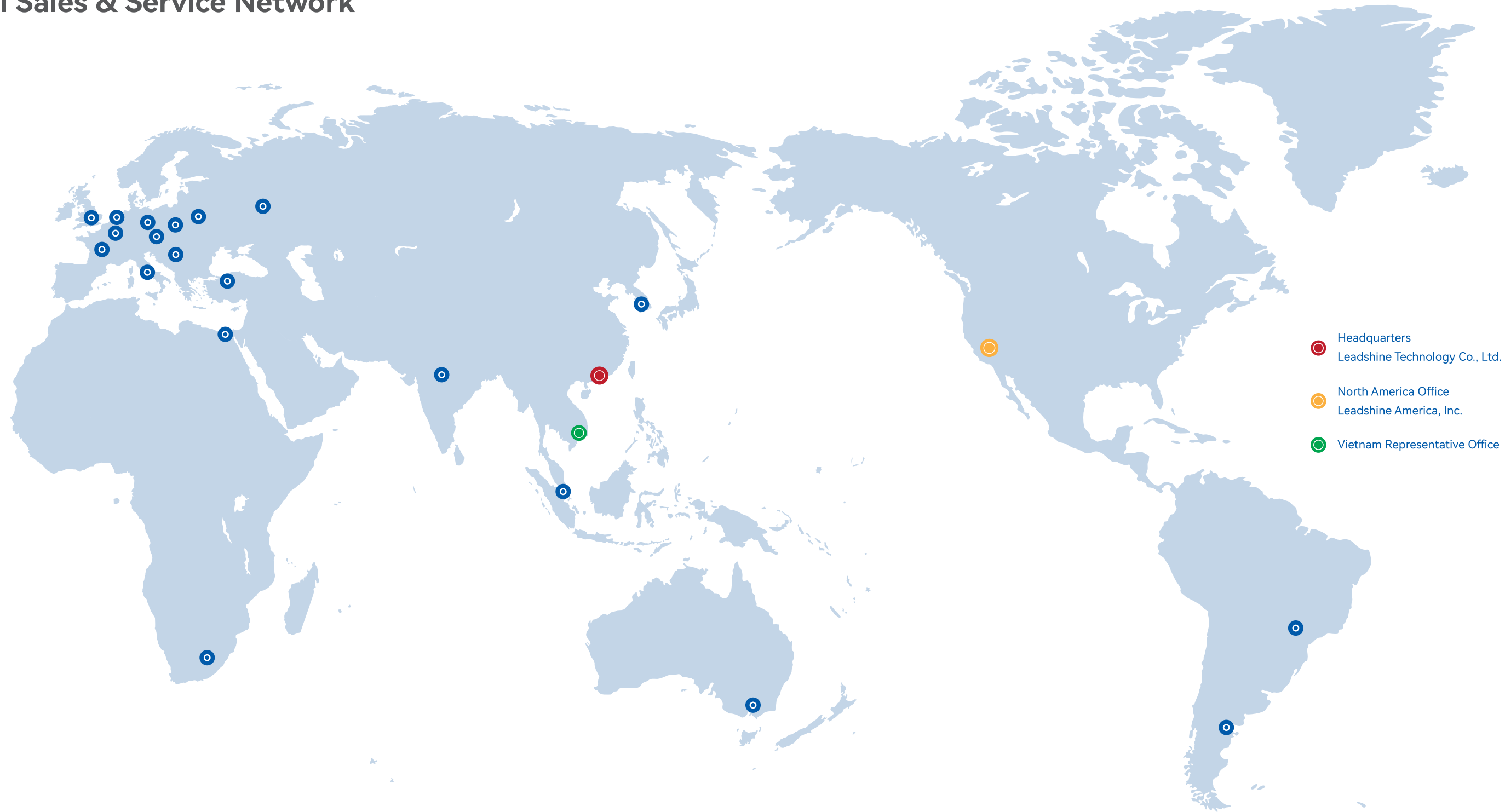
- Food packaging equipment
- Beverage packaging equipment

Main Clients

+	+	+	+	+
+	+	+	+	+
+	+	+	+	+
+	+	+	+	+
+	+	+	+	+
+	+	+	+	+
+	+	+	+	+

- Provide more intelligent . more accurate. high reliable products and solutions ;
- Widely used in Robotics. Laser. CNC. Medical. Electronics. Printer. etc ;
- Deeply cooperate with research Institute. University and other companies.

Global Sales & Service Network



1997 Innovation

- **1997** Founded in Shenzhen
- **1999** 1st Motion controller launched
- **1999** 1st Stepper Drive launched
- **2002** 2 Patents granted

2007 Development

- **2003** SW copyrights awarded
- **2004** ISO9001 QM certificated
- **2005** Digital stepper drive launched
- **2007** Leadshine became No.1 brand for stepper products in China

2012 Solidarity

- **2008** 1st Digital stepper drive in China - DM series launched
- **2009** Digital DC Servo Drive launched
- **2011** 1st Easy Servo in China launched

2018 Solidarity

- **2012** 1st Integrated Motor in China launched
- **2013** EL5 series AC Servo launched
- **2015** EL6 series EtherCAT Servo launched
- **2016** EM3 series open loop EtherCAT stepper products launched

2022 Cooperation

- **2017** CS3E series closed loop EtherCAT stepper products launched
- **2019** EL7 Series AC servo products launched
- **2020** Public listed (002979.SZ)
- **2022** EL8 Series AC servo products launched
- **2022** PMC600 Series PLC launched
-